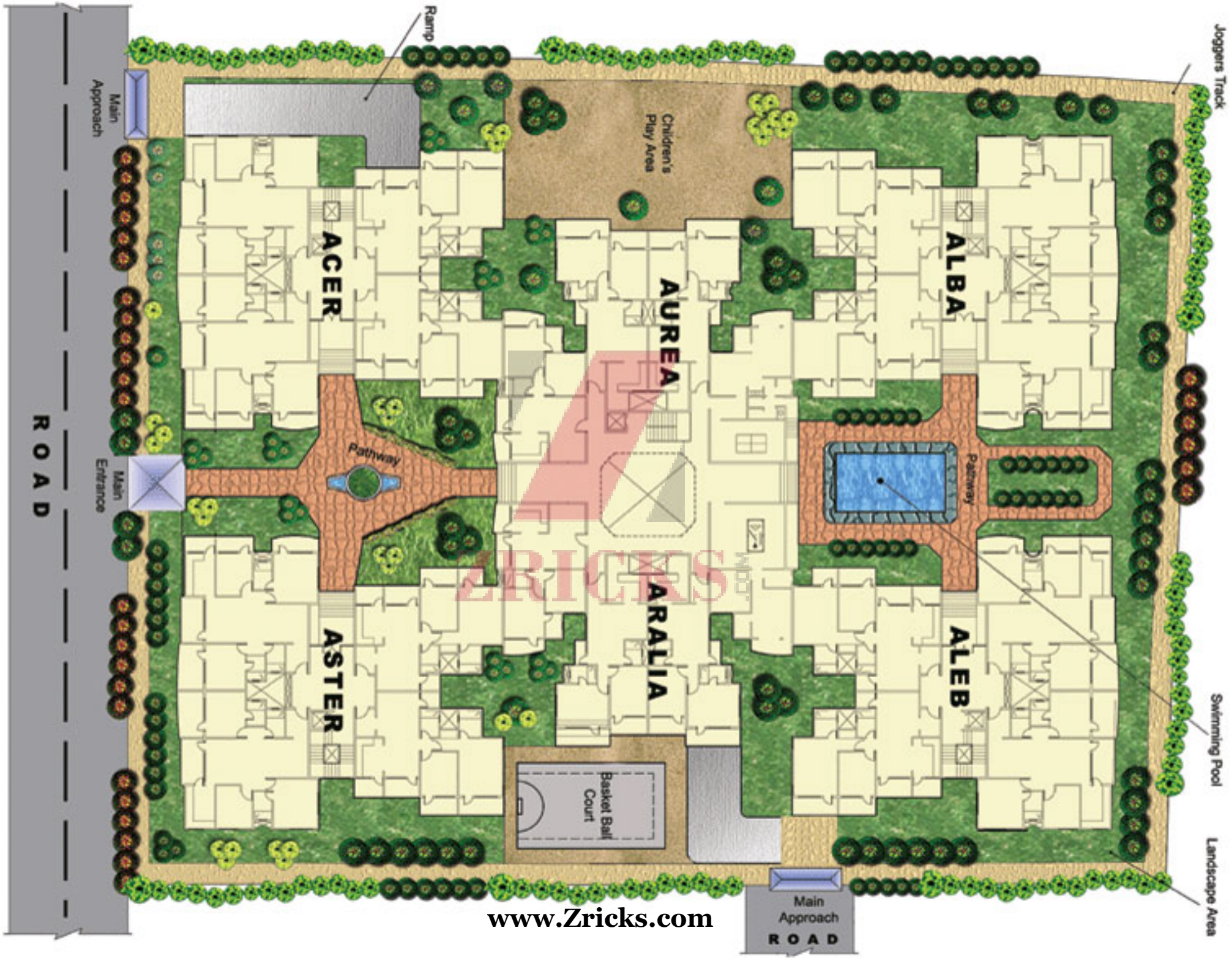
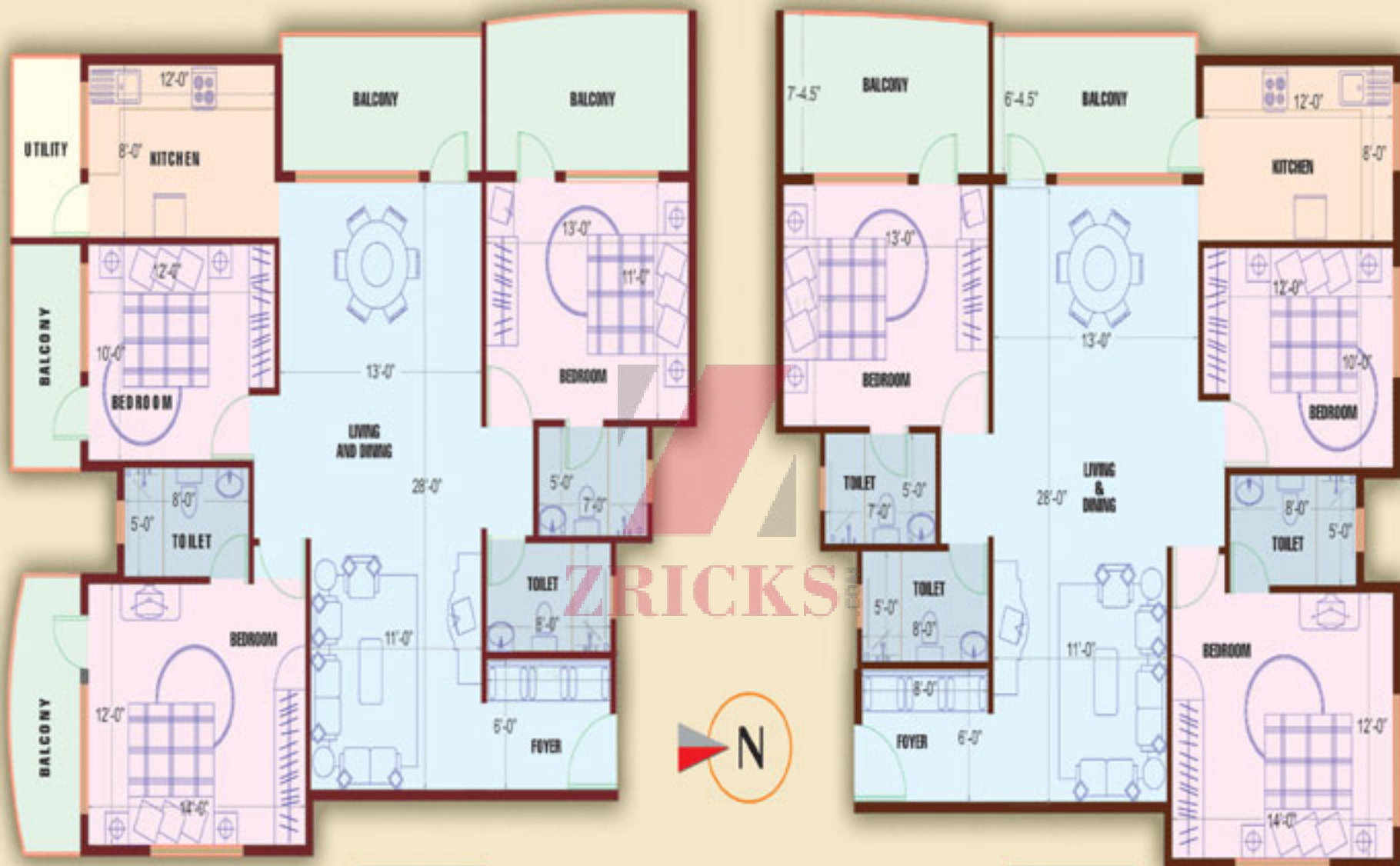




www.Zricks.com

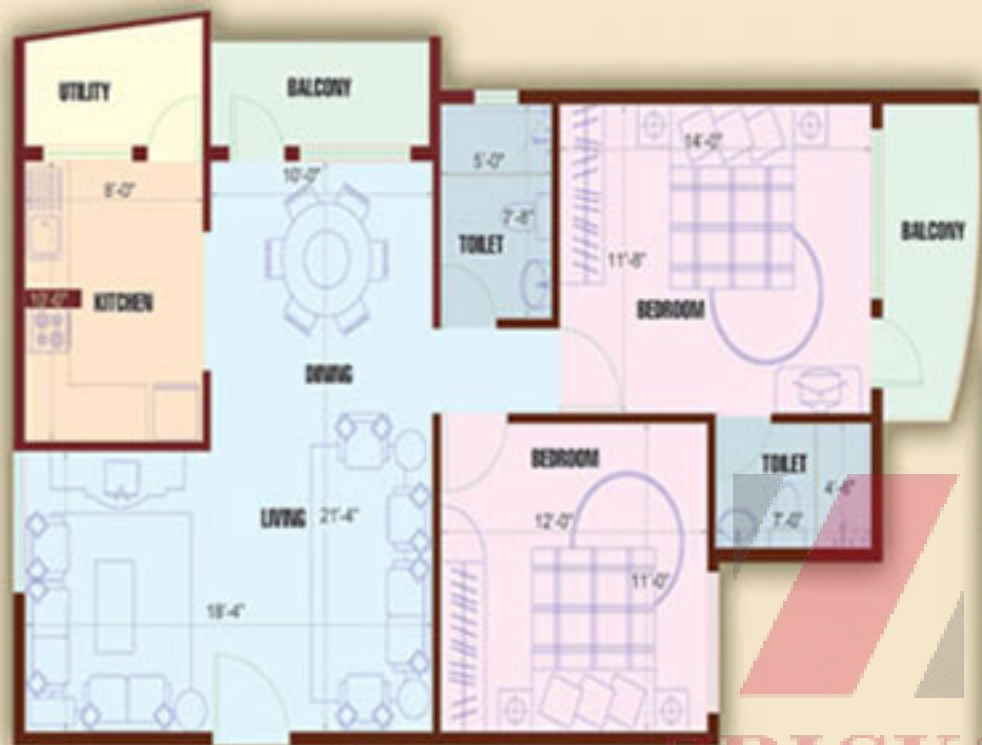




1719 Sft
3 BHK

www.Zricks.com

1541 Sft
3 BHK



1115 Sft
2 BHK

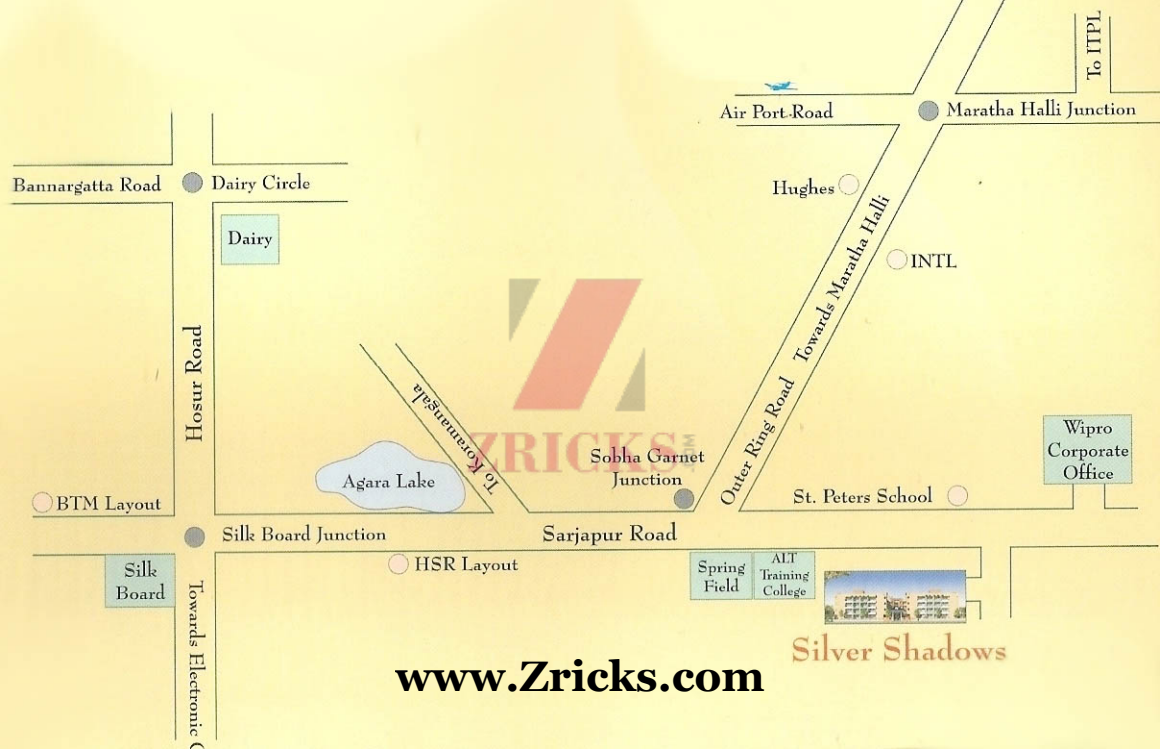


ZRICKS



1343 Sft
2 BHK

www.Zricks.com



To ITPL

Air Port-Road

Maratha Halli Junction

Bannargatta Road

Dairy Circle

Hughes

Dairy

INTL

Hosur Road



To Koramangala



Sobha Garnet Junction

Outer Ring Road Towards Maratha Halli

Wipro Corporate Office

BTM Layout

St. Peters School

Silk Board Junction

Sarjapur Road

HSR Layout

Silk Board

Towards Electronic C

Spring Field
AIT Training College



Silver Shadows

www.Zricks.com

Specification

Structure

- Seismic Zone II compliant RCC framed structure of high quality.
- Concrete solid block masonry 6' for external & 4' for internal walls.

Plastering

- All internal walls are finished with lime rendering.
- All external walls are sand faced finish.

Flooring

- Quality vitrified tiles for Living & Dining.
- Rectified ceramic tiles for Bedrooms & Kitchen.
- Anti-Skid tiles for Balcony, Toilets & Utility.

Kitchen

- An open, well-ventilated Kitchen with Utility space attached.
- Granite platform with Stainless Steel Sink with drain board, 2' height glazed tiles dadoing.
- Provision for water purifier.
- Provision for exhaust fan.
- Provision for electrical plumbing point in utility area for washing machine.
- Option for Modular Kitchen: Only Electrical and Plumbing points will be provided

Doors

- **Main Door:** Teak wood frame with Teak paneled shutter with brass hardware and polish on both sides.
- **Internal Doors:** Sal wood frame with flush doors for toilets & balcony's waterproof flush doors (good quality hinges, locks and handles), with superior enamel paint.

Windows

- Powder coated Aluminium sliding windows with clear glass in three tracks, provision for mosquito mesh with protective MS designed grill

Paint

- Internal walls and ceilings: Superior quality Acrylic Distemper paint.
- External walls: Water proof colored cement paint.

Toilets

- Quality glazed tiles dado up to 7' height.
- White sanitary ware of hind ware/CERA brand.
- Hot & Cold water mixer unit for showers, reputed make CP Fittings.
- Health faucet will be provided in all toilets.
- Provision for geyser in all toilets.
- Provision for exhaust fan.

Electrical

- Best quality fire resistant cables, wiring through PVC conduits concealed in walls and ceilings.
- Best quality Modular Switches.
- TV point in Living and Master Bedroom.
- Telephone point in Living and Master Bedroom.
- Split AC point in Master Bedroom.
- For safety One Earth Circuit Leakage Breaker(ELCB) AND MCB's.
- 3KW for 2BHK & 4KW for 3 BHK

Generator

- Power back up for each flat 0.5 KW.
- Power back up for common area lighting and Water Motors.

Lift

- Reputed make of 6 passenger Lift, with power back-up

Parking

- Well planned sufficient covered / open car parking

ZRICKS.COM